



Raptors Hockey Club

2020-21 Bantam A 2007 Program Guide

ORGANIZATION

Affiliation:

Raptors Hockey Club is a member of USA Hockey under the local affiliate Carolina Amateur Hockey Association (CAHA)

Organization Executives:

- Stan Mithios
- Ed Levens



RAPTORS HC

Philosophy:

Raptors Hockey Club will be the **“Organization For Coaches”**

Raptors HC aims to provide an environment that will encourage our Coaches and Team Managers to act with autonomy to nurture and develop guidelines that will cater to the needs of the players specifically on their team.

Raptors HC will work with Player Development and Player Advancement as our primary goal and guiding principle. Families of the hockey community will be looking to us to provide a positive, structured, supportive, competitive, safe, and fun environment for their kids – and we will do everything to accept, respect, flourish and deliver under these responsibilities that we take seriously.



BANTAM 07 TEAM

Team Staff:

Head Coach – Ken DiOrio

Team Manager – TBD

Assistant Coach – Matt Cross

Assistant Coach – TBD *

** Because the Head Coach of the team is a "Non-Parent", the team will seek to have at least one parent as part of the coaching staff. (will serve as a great Check & Balance)*

Team Roster:

Team will roster a total of 17 or 18 players.

(Either 9/6/2 or 10/6/2)

Competitive Level:

Locally in Raleigh: A/AA

CHL Level: A

(considerations will be made for it being the first year of body contact for the players on the team)

Outside of Raleigh: A



HOME ICE

- The Raptors Hockey Club will once again contract its time slots for home games:
 - **Saturday's for 1 game.** Saturday home games during the 2019-20 season were 2:15pm @ Factory Wake Forest, per contracted ice.
 - **Sunday's for 1 game.** Most Sunday home games during the 2020-21 season were 8:45am @ Factory Wake Forest, per contracted ice.
- Allotted Ice Time for Games : 90 min
- Number of Home weekends : 6
 - Potential for adding a 7th home weekend as practice or games.



GAMES

The team will plan to play in the CHL, most likely in the Bantam Lower A division:

- 4 Games = "Home & Home" matchups Vs. 2 Teams
- 12 Games = CHL Schedule
- 16 Games = 4 Tournaments (potential for extra games)
- 2 Games = Exhibition or Extra Games

2020-21 H&H Targets will be:

**The St.James
Jr. Hurricanes**

**Charlotte Rush
Richmond Generals**

**Triad Storm
NC Force**

**Wilmington Icehawks
Hampton Roads Whalers**

2020-21 Tournament Targets will be:

Raleigh (Local)

Philadelphia, PA

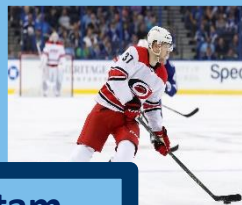
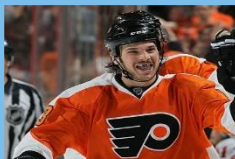
Hershey, PA

Charlotte, NC

Total Games: 42, of which 20-22 will be games in Raleigh.

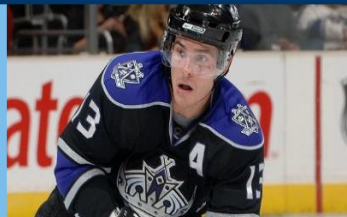


ONCE THE PASSION FOR TRAINING HAS BEEN IGNITED... DREAMS CAN COME TRUE !!!



Here are some players that your Raptors Bantam Development Coaches worked with when they were just kids...

Top Left Clockwise - Brent Burns, Trevor Daley, Daniel Carcillo, Tyler Seguin, Warren Foegele, John Tavares, Malcolm and PK Subban, Joshua Ho Sang, Michael Cammalleri, Michael Vernace, Anthony Nigro, Matthew Pelech, Daniel Girardi, Chris Terry.



ICE TIME & DEVELOPMENT

Pre-Season Team Training Camp:

- 6 Hours On Ice (Most likely over one full weekend)

On Ice Practice:

- 1 Hour Weekly (most likely @ Factory Wake Forest, but could potentially move)
- 2019-20 Time Slot : Wednesday 5:30pm-6:30pm @ Factory Wake Forest.
- 2020-21 Time Slot : TBD, will likely be later time slot than last season.

On Ice Development:

- 1 Hour Weekly, 2019-20 was Tues 4:45pm @ Factory Wake Forest (Skating/Agility/Puck)*
- 1 Hour Weekly, 2019-20 was Thurs 5:45pm @ Factory Wake Forest (Shooting & Scoring)*

**Schedule for 2020-21 sessions will likely vary slightly.*

Total On Ice for Team Practice & Development : 74 Hours!



Pre Season Training Camp

Will Take place in August 2020, featuring both ON and OFF ICE team building sessions daily :

• OFF ICE FEATURES

- Individual and Team Goal Setting
- Player Handbook
- Hockey System Implementation
- Personal Brand Statements
- Personal ABC's
- Concussion Symposium
- Nutrition Discussion
- Fitness Evaluation
- Agility and Strength Work
- Team Lunch and/or dinner

• ON ICE FEATURES

- Hockey System Implementation
- Agility and Strength Work
- Player Evaluations
- PTH Hockey Instruction
- Power Skating
- Shooting and Scoring
- Puck Control
- Skating Treadmill
- Passing
- Defensive Zone Coverage



EXTRA TRAINING & DEVELOPMENT

The team will take full advantage of the Prime Time Hockey training facility in 2 ways:

- 6 90-min Team Training sessions for an additional 9 hours of training & development
- 2 weekly 30min shooting sessions in small groups following one of the team's on ice sessions during the week. *

**small group shooting sessions will be scheduled on the days the team will be at The Factory. This season the sessions may be conducted in smaller groups bi-weekly.*



THE DEVELOPMENT PROCESS

Part of the Development Process for the Raptors Peewee Team will be to have an open line of communication with players and parents thru Individual Evaluations.

The coaching staff will conduct individual player evaluations in 3 phases during the hockey season:

- 1) Post Training Camp Evaluation.
- 2) Mid-Season Evaluation.
- 3) Final Evaluation at Season's End.



OUR COLORS



COMMUNITY SERVICE

In addition to developing our players on the ice, Raptors HC will aim to have our players help develop and improve parts of our local community.

It will be a goal to have our entire Bantam 07 team participate together in a minimum of 3 hours of Community Service.



Last season the Raptors filled and delivered Xmas Stockings for a senior citizens home, and they also participated in the JDRF One Walk for Type 1 Diabetes awareness and fundraising.



VALUE

We ENCOURAGE you to compare:

- 100 Total Hours of Training & Development
- Training & Development under the supervision of a Development program with over 30 years of experience working and directing advanced Skating and Hockey curriculums
- 40+ Hockey Games
- Set days and location for Home Games

All for a Registration Fee of \$3,895

**Equipment & Apparel package for 2019-20 was \$455. An 'A La Cart' menu will be made available for returning Raptors that don't require entire package.*



Payment Options

There will be 4 options available for payment of registration fees.

All payments made by credit card will be subject to an additional 3% fee.

Option 1: Full Payment

- Full payment of \$3,845 upon signing
- \$50 discount from full fee of \$3,895

Option 3: 4 Payments

- \$1,195 upon signing
- \$950 June 11, 2020
- \$900 July 2, 2020
- \$850 on August 8, 2020

Option 2: 3 Payments

- \$1,495 upon signing
- \$1,200 July 1, 2020
- \$1,200 August 8, 2020

Option 4: 5 Payments

- \$895 upon signing
- \$850 June 12, 2020
- \$750 July 2, 2020
- \$700 on July 20, 2020
- \$700 on August 8, 2020



COVID POLICY

No one can accurately plan for the current state of the world and the impact COVID-19 has had on our lives. The changes that have taken place and the uncertainty of when things might return to normal are unprecedented.

The Raptors Hockey Club is confident that a new normal will emerge that will allow us to practice, play games and even go to tournaments. We just don't know when this will happen. As we build-out and implement our programs, our number one priority is the safety and well-being of our players, families and coaches.

With that said, the key word that will describe our COVID Policy is **FLEXIBILITY**. We will be flexible with our programming to allow our teams to safely practice and train. We will be flexible with our facility hours to give smaller groups of players an opportunity to complete sessions. We will be flexible with our payment plans to reflect what we *can do*, and **NOT** what we *think is possible*.

Please feel free to contact the RAPTORS directly for any further assistance you may need regarding our COVID-19 Policy.



EQUIPMENT PACKAGE

Included as part of the Raptors Squirt package:

- Personalized, high quality Home and Away game jerseys.
- High quality Home and Away game socks.
- Personalized, high quality canvas hockey bag.
- High quality, 3-color pant shells.
- Track suits, jacket & pants.
- Pair of dry-fit athletic shorts.
- Dry-fit athletic tee shirt.
- Helmet Stickers

Optional equipment add on:

- Customized Raptors hockey gloves.



**Equipment & Apparel Package was \$455 in 19-20. It will be similar for 20-21.*

**Players must provide their own white helmet.*



#1 REASON TO BE A RAPTOR ???

Easy...!

Because after all of the ice time, the development, the culture, and the value - when it comes to the kids...*we just know how to have the most fun and create the best memories !!!*



The RAPTORS have arrived...!!!



NOTES

